

INDIVIRTUS PROFILE

Indivirtus is an outsourcing service provider with real-time cost-effective solutions, offering the perfect blend of quality and economy to diversified industries. Highly experienced and well-trained Executives, Managers and Business Heads are capable of delivering the finest services matching all the customer requirements. We help the industries to maximize their efficiencies in its core competencies while helping them grow their business.



INSURANCE

(Personal Lines and Commercial Lines)



SERVICES

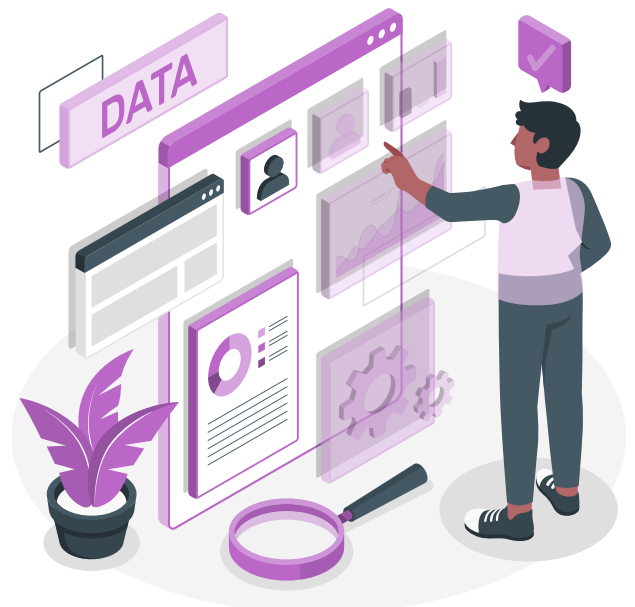
- Quotation, Submission & Rating Services
- Binder Services
- Policy Issuance & Checking Services
- Certificate of Insurance
- Generating Acord Forms (25/27/80/125/126/130/140)
- Order Loss Runs
- Endorsements (Premium & Non-premium)
- Inspection Services
- Claims Services
- Policy Cancellation and Reinstatements Services
- Policy Renewal Services

SOFTWARES

- Ezlynx
- QQ Catalyst
- Applied EPIC
- Applied DORIS
- AMS 360
- HawkSoft
- Nexsure

DATA MANAGEMENT

- Data Processing Services
- Data Analytics Services
- Data Quality Services
- Data Conversion Services
- Data Entry Services



ACCOUNTING SERVICES

- Ledger Maintenance
- Bank & Credit Card Reconciliation
- Accounts Payable & Receivable
- Cash Flow Management Financial
- Reporting & Analysis
- Audit Support
- Payroll Reconciliation
- Bookkeeping
- Sales Tax
- Individual & Corporate Tax

SOFTWARES

- QuickBooks
- NetSuite
- AMS360
- Xero
- Bill.com
- ADP
- Gusto



INDIVIRTUS SOLUTIONS PVT. LTD. GLOBAL OFFICES

INDIA

521-522, 2nd Floor, Taj Plaza,
Sector-118, Mohali, PB 160059, India
+91 9131925456 | +91 9888139921
director_ops@indivirtus.com

USA

1100 Town & Country Road
Suite1250, Orange
CA 92868
+1 (323) 412-5391
global.bd@indivirtus.com

UK

16 Bissley Drive,
Maidenhead, Berkshire
SL6 3UZ
+44 20 3286 0405
support.uk@indivirtus.com

CANADA

Unit 307, 14255 Boul Gouin O,
Pierrefonds, Montreal
Quebec H8Z3C2
+1 639 318 7360
support.ca@indivirtus.com



QR SCAN



global.bd@indivirtus.com



www.indivirtus.com